



INSTRUCTION BULLETIN

No. 9012961
Machine: T17
Published: 03-2015
Rev. 00

NOTE: DO NOT DISCARD the Parts List from the Instruction Bulletin. Place the Parts List in the appropriate place in the machine manual for future reference. Retaining the Parts List will make it easier to reorder individual parts and will save the cost of ordering an entire kit.

NOTE: Numbers in parenthesis () are reference numbers for parts listed in Bill of Materials.

Installation instructions for **kit number 9020235**

SYNOPSIS:

This kit contains the parts needed to replace a cylindrical brush panel assembly on T17 scrubbers. Please follow step-by-step instructions.

SPECIAL TOOLS / CONSIDERATIONS: NONE

(Estimated time to complete: 1 hour)



PROTECT THE ENVIRONMENT

Please dispose of packaging materials, used machine components such as batteries and fluids in an environmentally safe way according to local waste disposal regulations.

Always remember to recycle.

PREPARATION:

1. Remove the brushes from the main scrub head and completely lower the main scrub head. Discard the removed idler door assembly. (Fig. 4)

NOTE: Refer to the MAINTENANCE section of the OPERATORS MANUAL for information how to remove the idler plate and cylindrical scrub brush from the machine.

FOR SAFETY: Before leaving or servicing machine, stop on level surface, turn off machine, set parking brake, and remove key.

2. Disconnect the battery cable from the machine.



WARNING: Always disconnect battery cables from machine before working on electrical components.

INSTALLATION:

1. Remove the belt cover from the panel assembly. Discard the belt cover. (Fig. 1)

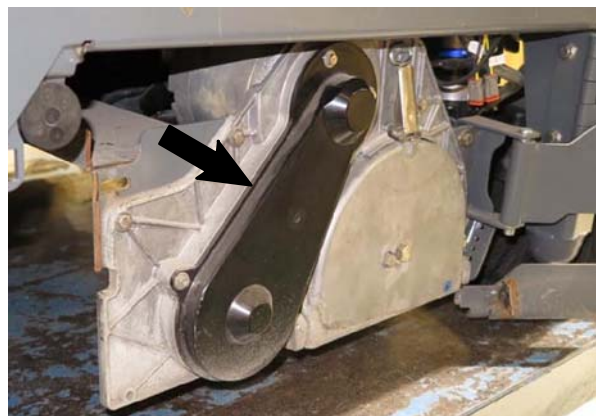


FIG. 1

2. Remove the M8 hex screw securing the larger sheave to the panel assembly. Discard the M8 hex screw and washers. (Fig. 2)

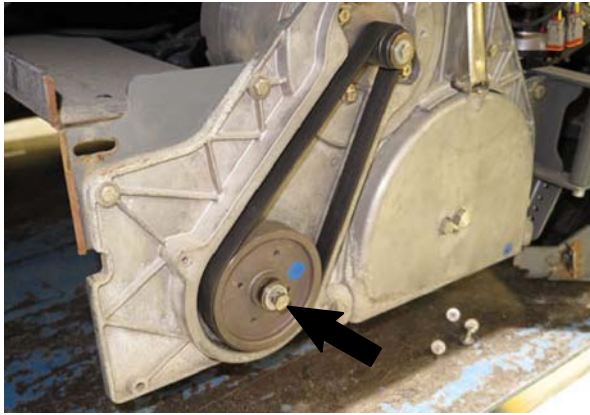


FIG. 2

3. Thread two M6 X 1.00 X 35 hex screws into the sheave and use the hex screws to remove the sheave and drive belt from the panel assembly. Discard the sheave and the drive belt. (Fig. 3)



FIG. 3

4. Remove the five M6 hex screws and five flat washers securing the panel assembly to the main scrub head. Discard the M6 hex screws and flat washers. (Fig. 4)
5. Pull the panel assembly from the machine and disconnect the main wire harness from the brush drive motor. (Fig. 4)
6. Remove the brush drive motor from the panel assembly. Set the brush drive motor, sheave, set screw, washers, M6 hex screw, key, M6 hex screws (Qty. 4) and flat washers (Qty. 4) aside. Discard the belt and remainder of panel assembly. (Fig. 4)
7. Install the brush drive motor removed from the old panel assembly onto the new panel assembly (1). (Fig. 4)
8. Position the panel assembly (1) near the main scrub head and reconnect the main wire harness to the brush drive motor. (Fig. 4)
9. Use five M6 hex screws (27) and five flat washers (28) to install the panel assembly onto the main scrub head. (Fig. 4)

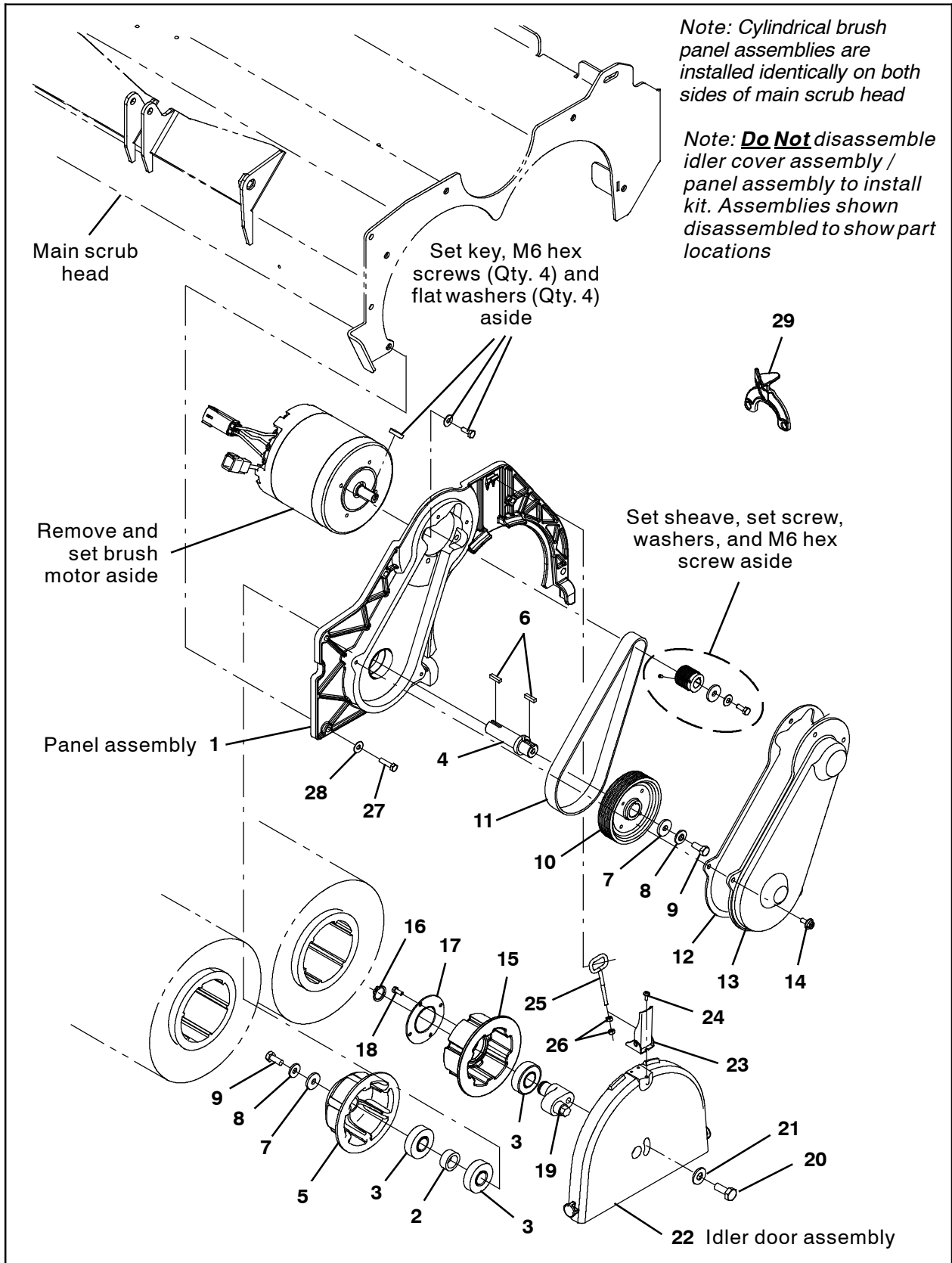


FIG. 4

10. Remove the two M6 SEMS hex screws from the previously removed belt cover to install the belt installation tool (29) onto the lower sheave (11). (Fig. 5)



FIG. 5

11. Situate the drive belt (11) onto the smaller sheave attached to the brush drive motor and the lower sheave (11). (Fig. 5)
12. Use one hand to turn the sheave clockwise with the wrench and the other hand to coax the drive belt (11) over the belt installation tool (29) and onto the lower sheave (10). (Fig. 6)



FIG. 6

13. Use hands to coax the drive belt (11) the rest of the way onto the upper sheave and lower sheave (10). Be sure the belt is completely seated into the grooves in both sheaves. (Fig. 7)



FIG. 7

14. Remove the belt installation tool (29) from the lower sheave. Save the belt installation tool for later use. Discard the M6 SEMS hex screws from the previously removed belt cover.
15. Use four M6 SEMS hex screws (14) to install the new belt guard (13) onto the panel assembly. (Fig. 4)
16. Reconnect the battery cable to the machine.
17. Start the machine and raise the main scrub head.
18. Reinstall the brushes into the main scrub head.
19. Install the new idler door assembly (22) onto the panel assembly (1). (Fig. 4)
20. Operate and test the machine. Ensure the brushes function properly.

Bill Of Materials For Panel Assy, Cyl, Afmkt [T17] - 9020235

Ref.	Tenant Part No.	Description	Qty.
▽	9020235	Panel Assy, Cyl, Afmkt [T17]	1
▲	1 1204637	Plate, Side, Wrap	1
▲	2 1204634	Spacer, Brg	1
▲	3 46390	Bearing, Ball, 0.79b 1.85d 0.55w	3
▲	4 1204643	Shaft, Drive, Brush	1
▲	5 1204881	Plug, Drive, Brush	1
▲	6 00911	Key, Sq, 0.19 X 0.19, 0.75l	2
▲	7 1017218	Washer, Flat, 0.32b 1.00d .12, SS	2
▲	8 41186	Washer, Flat, Belleville, .31	2
▲	9 12273	Screw, Hex, M8 X 1.25 X 20, NI, SS	2
▲	10 1204639	Sheave, 09grv, 4.13pd 0.75b [PJ]	1
▲	11 1204640	Belt Kit, Drive	1
▲▽	9020245	Cover Kit, Belt, Cyl, Afmkt [T7]	1
▲▲	12 1204880	Gasket, Belt, Cover	1
▲▲	13 1204642	Cover, Belt	1
▲▲	14 1034731	Screw, Hex, M6 X 1.00 X 16, SS, SEMS	4
▲▽	9020240	Door Assy, Idler, Cyl, Afmkt [T17]	2
▲▲	15 1204790	Plug, Idler, Brush	1
▲▲	16 26428	Ring, Retaining, Ext, 0.75d, HD	1
▲▲	17 1056838	Retainer, Brg, Iron Gray	1
▲▲	18 09738	Screw, Hex, M5 X 0.80 X 12, SS	4
▲▲	19 1204791	Cam, Adj, Brush	1
▲▲	20 09028	Screw, Hex, M10 X 1.50 X 25, SS	1
▲▲	21 01686	Washer, Flat, 0.44b 1.00d .08, SS	1
▲▲	22 1204441	Cover, Plug, Idler	1
▲▲	23 386257	Latch	1
▲▲	24 49697	Screw, Pan, Phl, M4 X 0.70 X 10, SS	3
▲▲	25 386247	Angle	1
▲▲	26 50335	Nut, Hex, Std, M5 X 0.80, 8	2
▲	27 09007	Screw, Hex, M6 X 1.00 X 25, SS	5
▲	28 01684	Washer, Flat, 0.27b 0.69d .05, SS	5
▲	29 1212849	Tool, Installation, Belt	1

TENNANT COMPANY
P. O. Box 1452
Minneapolis, MN 55440-1452